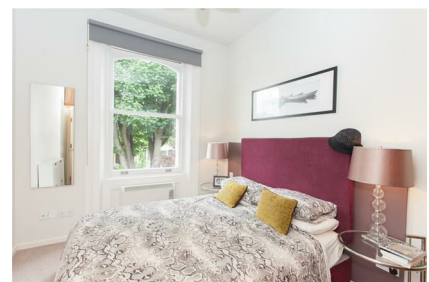


# Parkheath

*Sold on Service*

---

**Belsize Avenue NW3**  
**£2,000 PCM (£462 per week) - Camden Band D**

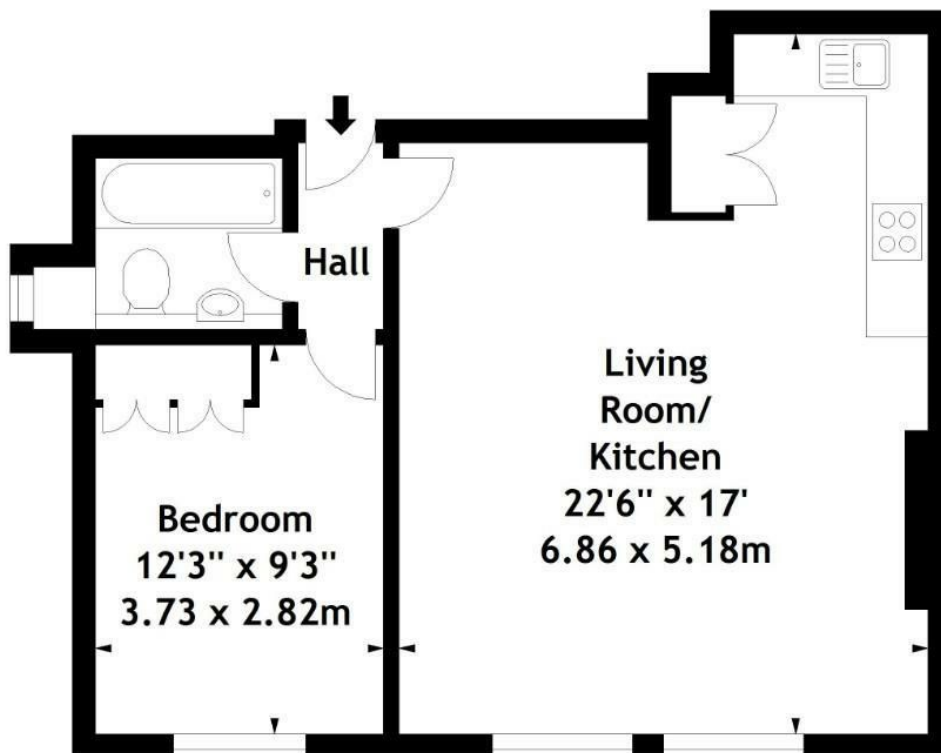


Stunning 1 bedroom apartment  
Wood floor reception  
Double bedroom with fitted wardrobes  
Moments to Belsize Park tube

2nd floor in period conversion  
Semi open plan kitchen  
Luxury bathroom  
Close to the areas amenities

Belsize Park Office 020 7431 3104

Belsize Avenue, NW3  
Approx. Gross Internal Area  
530 Sq Ft - 49.24 Sq M



## Second Floor

Measured in accordance with RICS guidelines. Every attempt is made to ensure accuracy, however all measurements are approximate.

This floor plan is for illustrative purposes only and is not to scale.

© Datagraphy Ltd 2014

Photographs \* Floorplans \* Virtual Tours

Tel: 0845 643 4401 [www.datagraphy.com](http://www.datagraphy.com)

The particulars do not constitute part of an offer or contract. The particulars, including text, photographs and plans, are for the guidance only of prospective purchasers/tenants and must not be relied upon as statements of fact. The descriptions provided therein represent the opinion of the author and whilst given in good faith should not be construed as statements of fact. Nothing in these particulars shall be deemed a statement that the property is in good condition or otherwise or that any services or facilities are in good working order. All measurements are approximate